

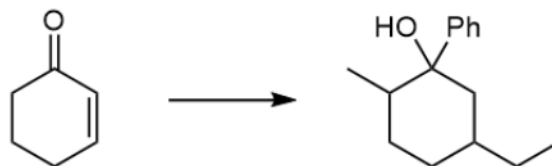
CHM 3150 Organic Chemistry II
Dr. Laurie S. Starkey, Cal Poly Pomona
Chapter 21, Enols & Enolates, Part 4 – [Practice Problems](#)

For clicker question voting, go to:
<https://pollev.com/lauriestarke263>



Which of the following lists the reagents required for the given transformation in the correct order of use?

1

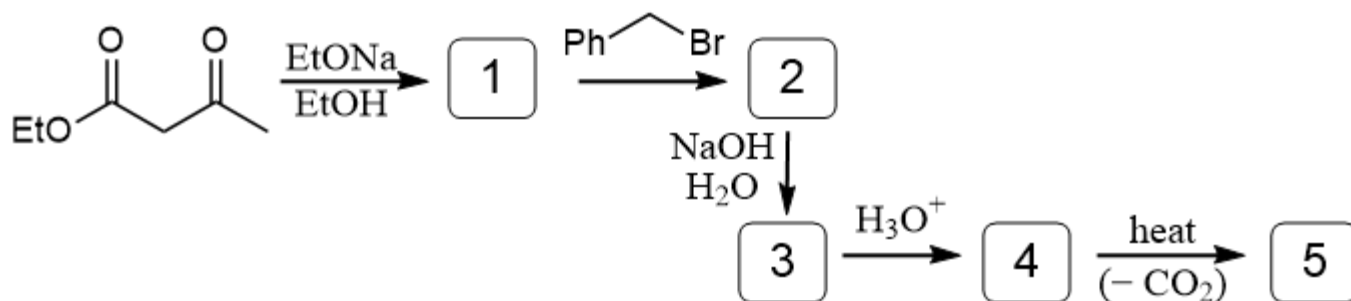


A) Et_2CuLi ; LDA; MeI; PhMgBr

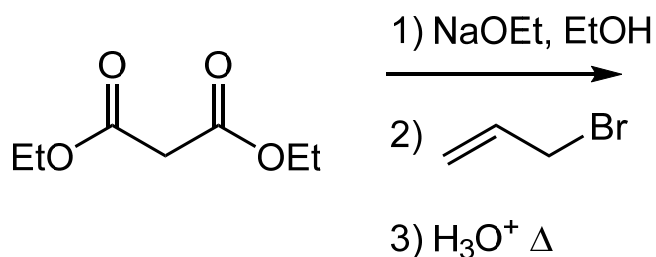
B) PhMgBr; LDA; MeI; Et_2CuLi

C) LDA; MeI; Et_2CuLi ; PhMgBr

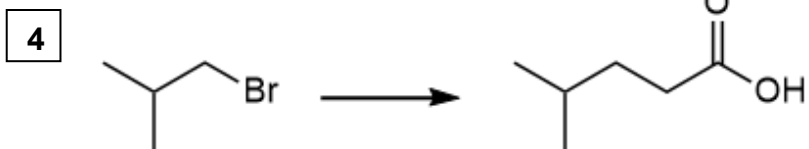
2 Predict the major products 1-5.



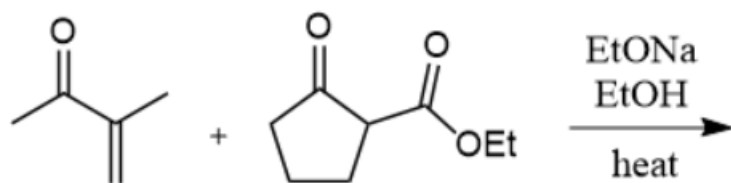
3



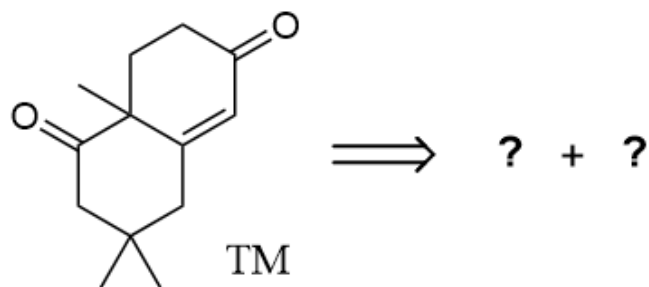
Provide the necessary reagents.



5 Predict the major Robinson annulation product.

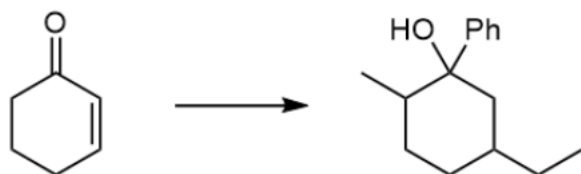


6 Provide the starting materials needed to prepare the given target molecule by a Robinson Annulation.



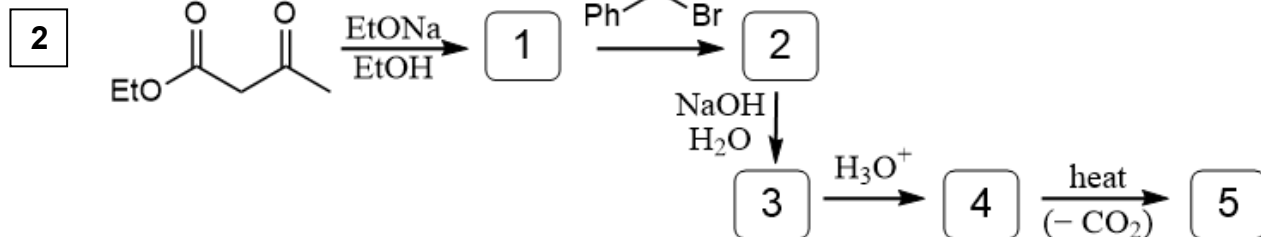
1

Which of the following lists the reagents required for the given transformation in the correct order of use?

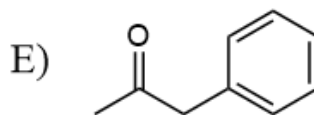
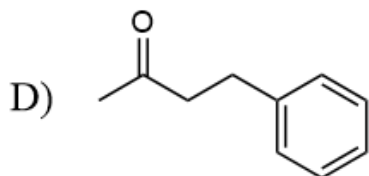
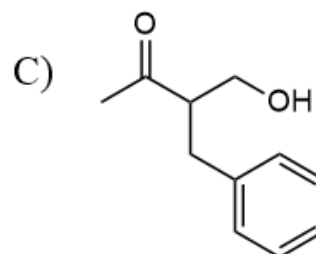
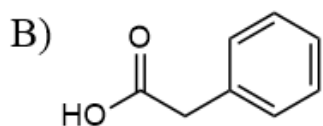
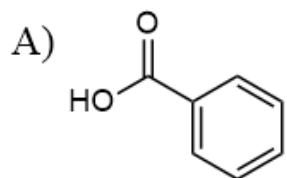


- A) Et_2CuLi ; LDA; MeI; PhMgBr
 B) PhMgBr ; LDA; MeI; Et_2CuLi
 C) LDA; MeI; Et_2CuLi ; PhMgBr

Predict the major products 1-5.



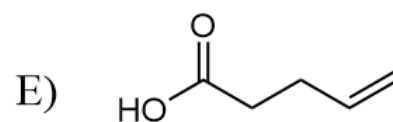
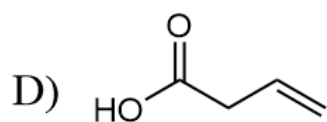
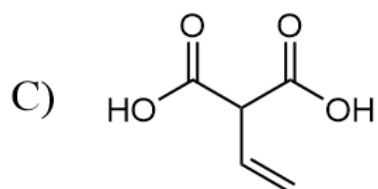
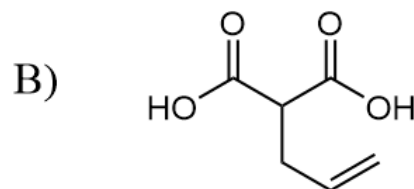
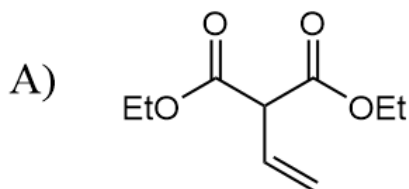
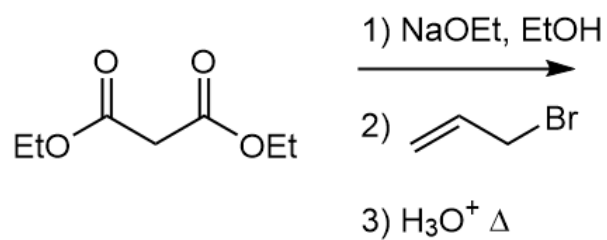
Which of the following is the final product (5)?



Predict the major product.

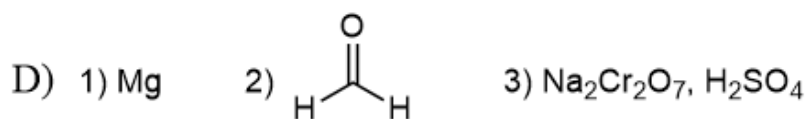
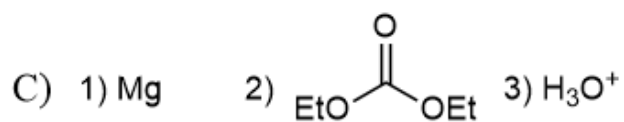
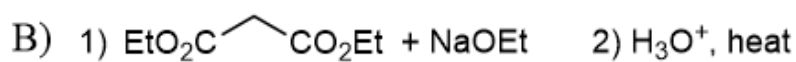
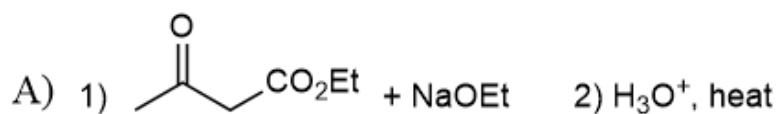
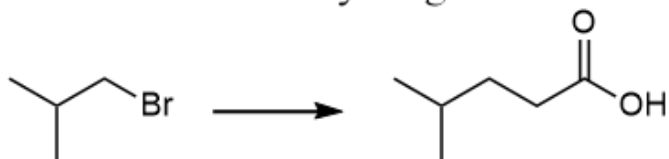
SkillBuilder 21.6

3

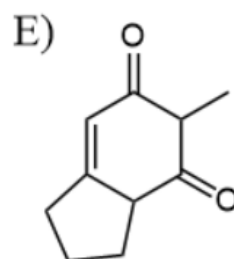
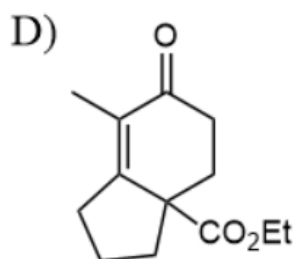
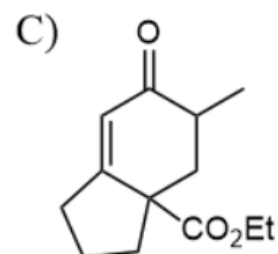
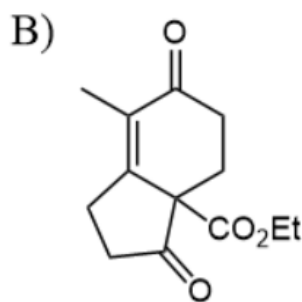
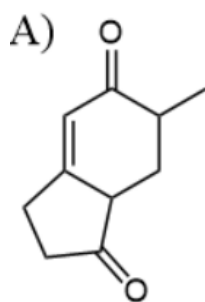
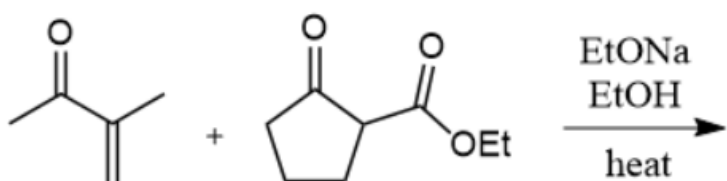


Provide the necessary reagents.

4



5 Predict the major Robinson annulation product.



6 Provide the starting materials needed to prepare the given target molecule by a Robinson Annulation.

