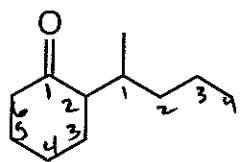
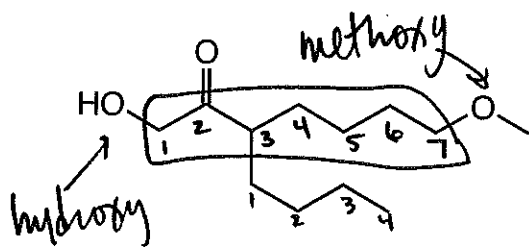


# ANSWER KEY

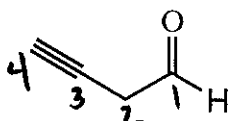
CHM 315, Dr. Laurie S. Starkey, Ketone/Aldehyde Nomenclature Practice Problems



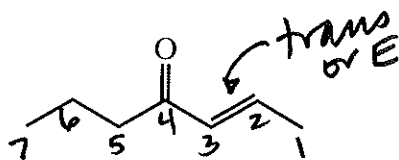
2-(1-methylbutyl)cyclohexanone



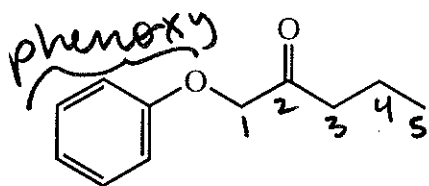
3-butyl-1-hydroxy-7-methoxy-2-heptanone



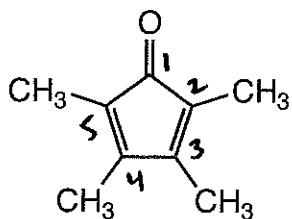
3-butynal or but-3-ynal



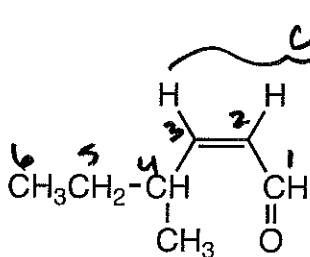
(E)-hept-2-en-4-one



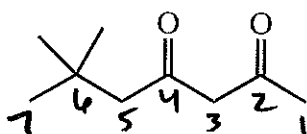
1-phenoxy-2-pentanone



2,3,4,5-tetramethylcyclopenta-2,4-dien-1-one



(Z)-4-methylhex-2-enal



6,6-dimethyl-2,4-heptanedione

Draw (Z)-5-methyl-6-butoxy-2-hexenal

same side  
(cis alkene)

aldehyde  
(C-1)

