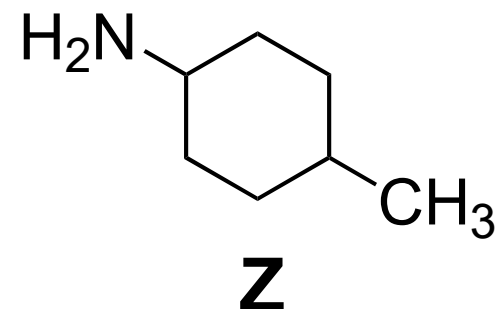
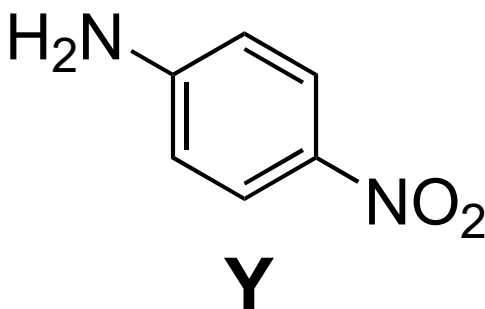
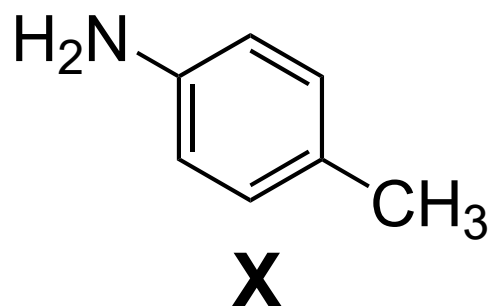


Which is the strongest base? Explain briefly.



- A) **Y** is the strongest base because **Y** is destabilized by the EWG.
- B) **Y** is the strongest base because its conj. acid is stabilized by NO_2 .
- C) **Z** is the strongest base because it has the least stable conj. acid.
- D) **Z** is the strongest base because the lone pair on N is localized.
- E) It's impossible to predict base strength without pK_a/pK_b data.