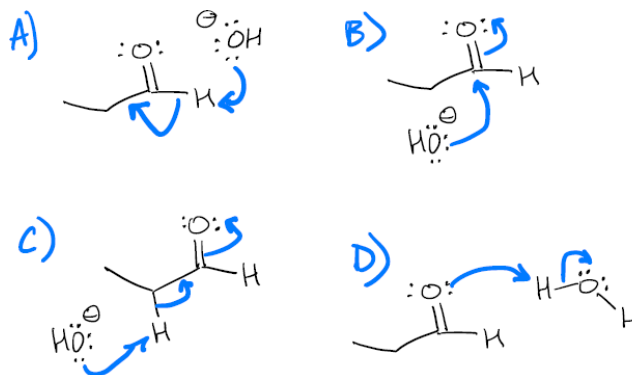
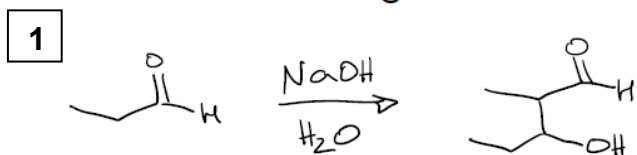
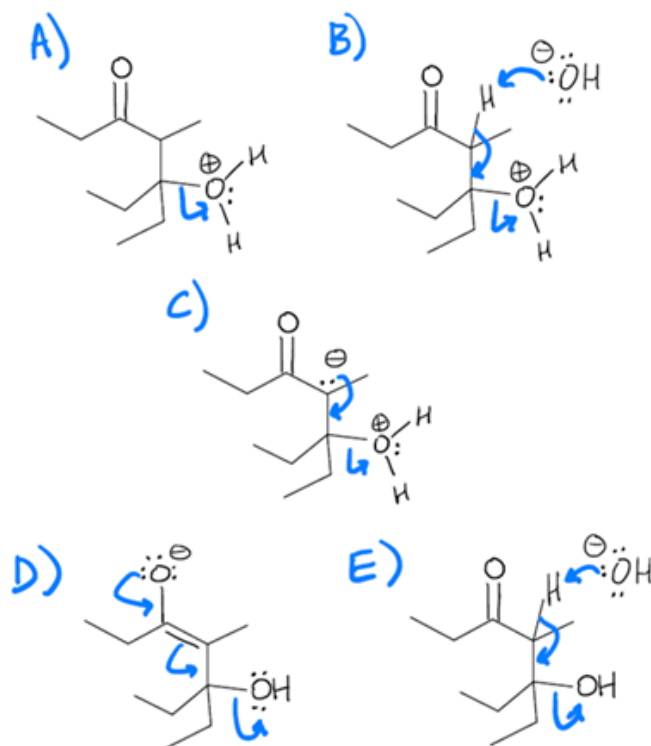
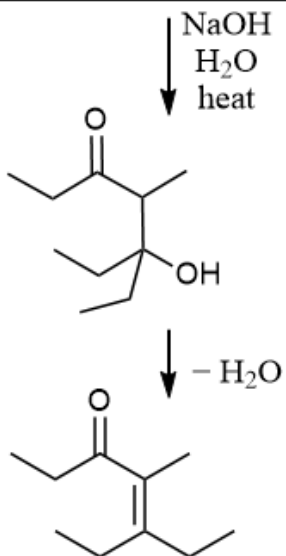




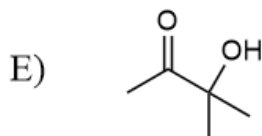
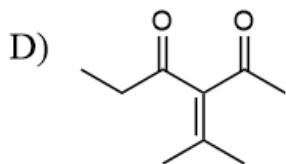
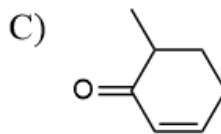
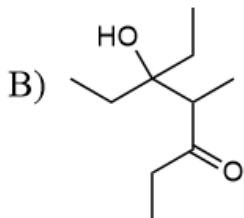
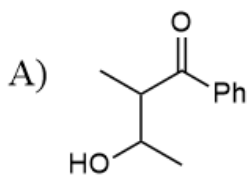
What is the most likely first step in the mechanism for the given reaction?



2 Draw the starting material for the given aldol reaction. Which of the following steps is likely to be in the mechanism to lose water?

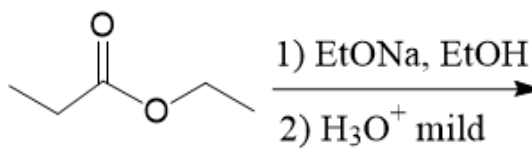
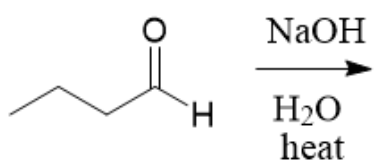


3 Which of the following could NOT be a product of an aldol reaction?



4

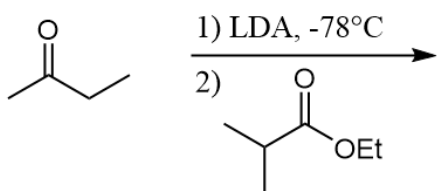
Predict the major products for the following reactions.



5

Provide a mechanism for the second reaction.

6 Predict the major product.



7

To obtain a neutral product, each of the following reactions requires an acidic aqueous workup EXCEPT:

