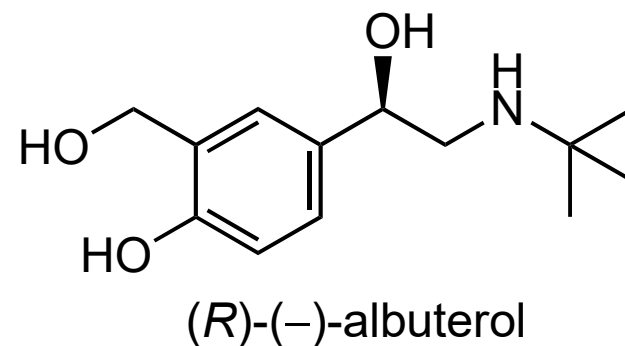


An asymmetric synthesis of albuterol resulted in a mixture that was 75% (R) and 25% (S). What is the expected specific rotation of this mixture? Albuterol $[\alpha]_{20}^D -32.2$ (c = 0.1 in water)



- A) mixture $[\alpha]_{20}^D = -24.2$
- B) mixture $[\alpha]_{20}^D = +24.2$
- C) mixture $[\alpha]_{20}^D = +16.1$
- D) mixture $[\alpha]_{20}^D = -16.1$