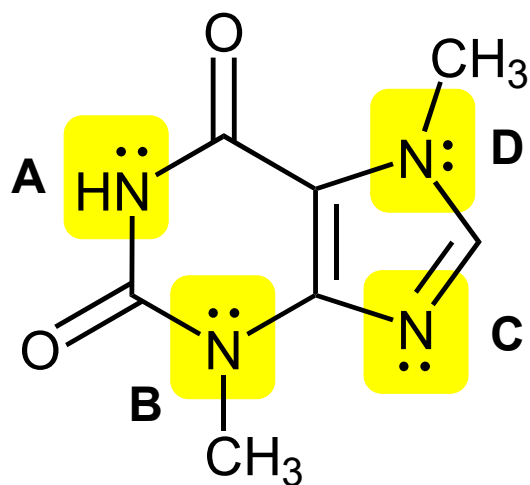


Theobromine is found in cocoa beans, and it is the compound responsible for making chocolate toxic to dogs. Consider the nitrogen atom lone pairs in theobromine. Which (if any) of these lone pairs is LOCALIZED?



theobromine

A) Lone pair A

B) Lone pair B

C) Lone pair C

D) Lone pair D

E) None of the above. These lone pairs are all *delocalized*.