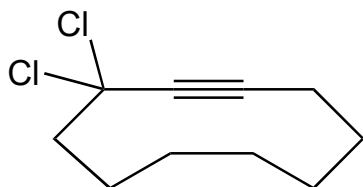
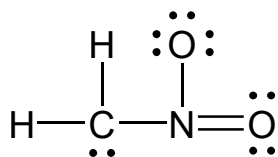


2A) (4 pts) Name the following compounds according to the IUPAC rules. Remember to designate stereochemistry, when appropriate. **Show all your work to receive full credit.**



2B) (6 pts) Provide a drawing for the following compound: **(S)-4-(1-methylethyl)-1-octene**

2C) (8 pts) The **anion** below, CH_2NO_2^- , has **three** important resonance contributors. On the structure below, **supply any missing formal charges**, and then draw **two additional** resonance forms. (Do not rank them.)



(overall -1 net charge)

2D) (5 points) Two isomers of the given alkene are known; the boiling point (bp) of one is 47 °C, and the other bp is 60 °C. Draw the two isomers, match each with the correct bp, and explain why the bp's are so different.

